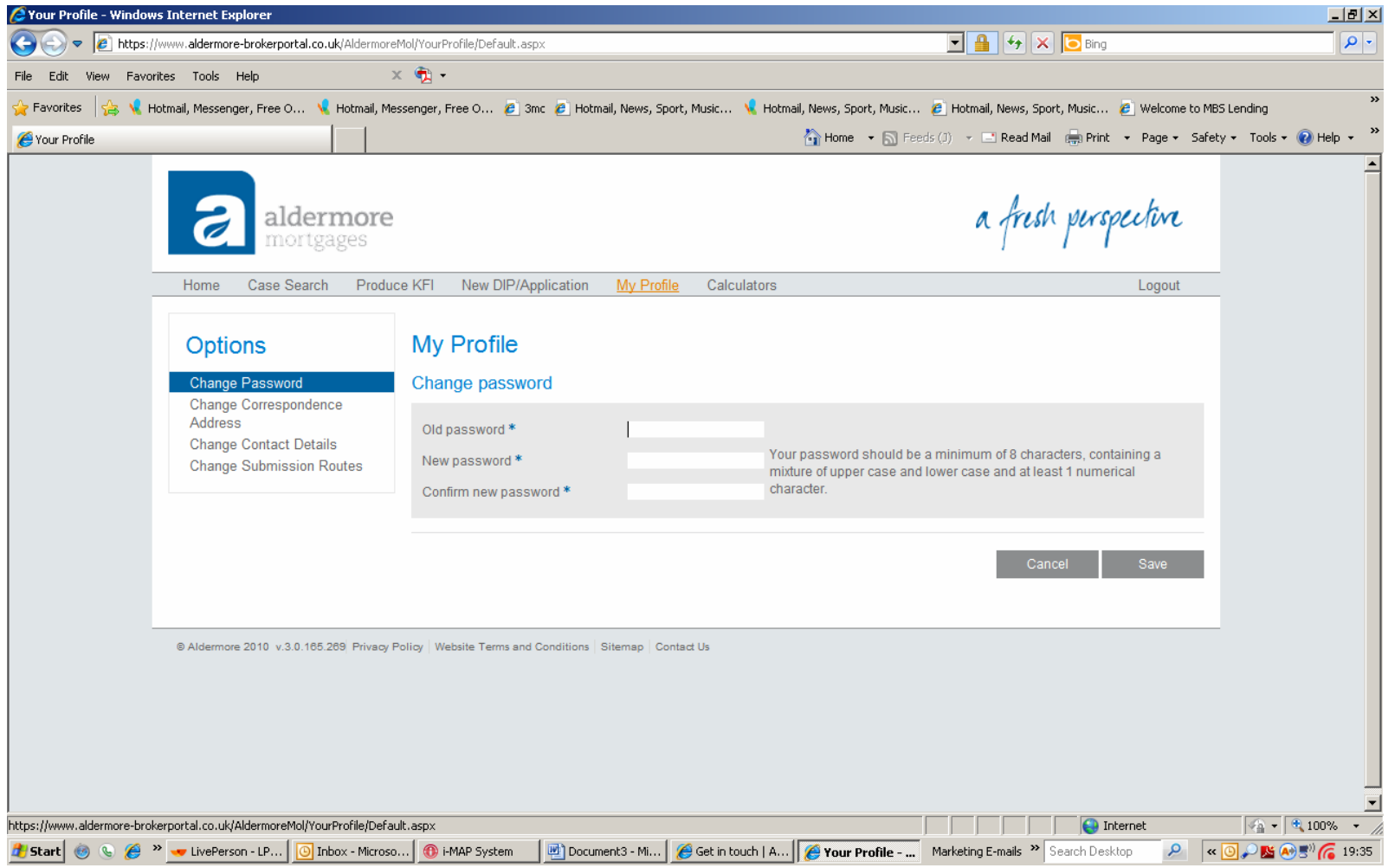


**Mortgage Intermediary to click on My Profile on the top tool bar within the Aldermore web portal**



**Mortgage intermediary to click on change submission routes within the options box on the left.**

**Options**

- Change Password
- Change Correspondence Address
- Change Contact Details
- Change Submission Routes**

### My Profile

#### Change submission routes

Select Mortgage Club/Distributor

- 3mc**
- BDS Mortgage Club
- L&G Mortgage Club
- Mortgage Intelligence - 7
- Mortgage Intelligence - Lighthouse
- Mortgage Intelligence Mortgage Club
- Mortgage Next - Passport
- Mortgage Next Mortgage Club

Preferred List

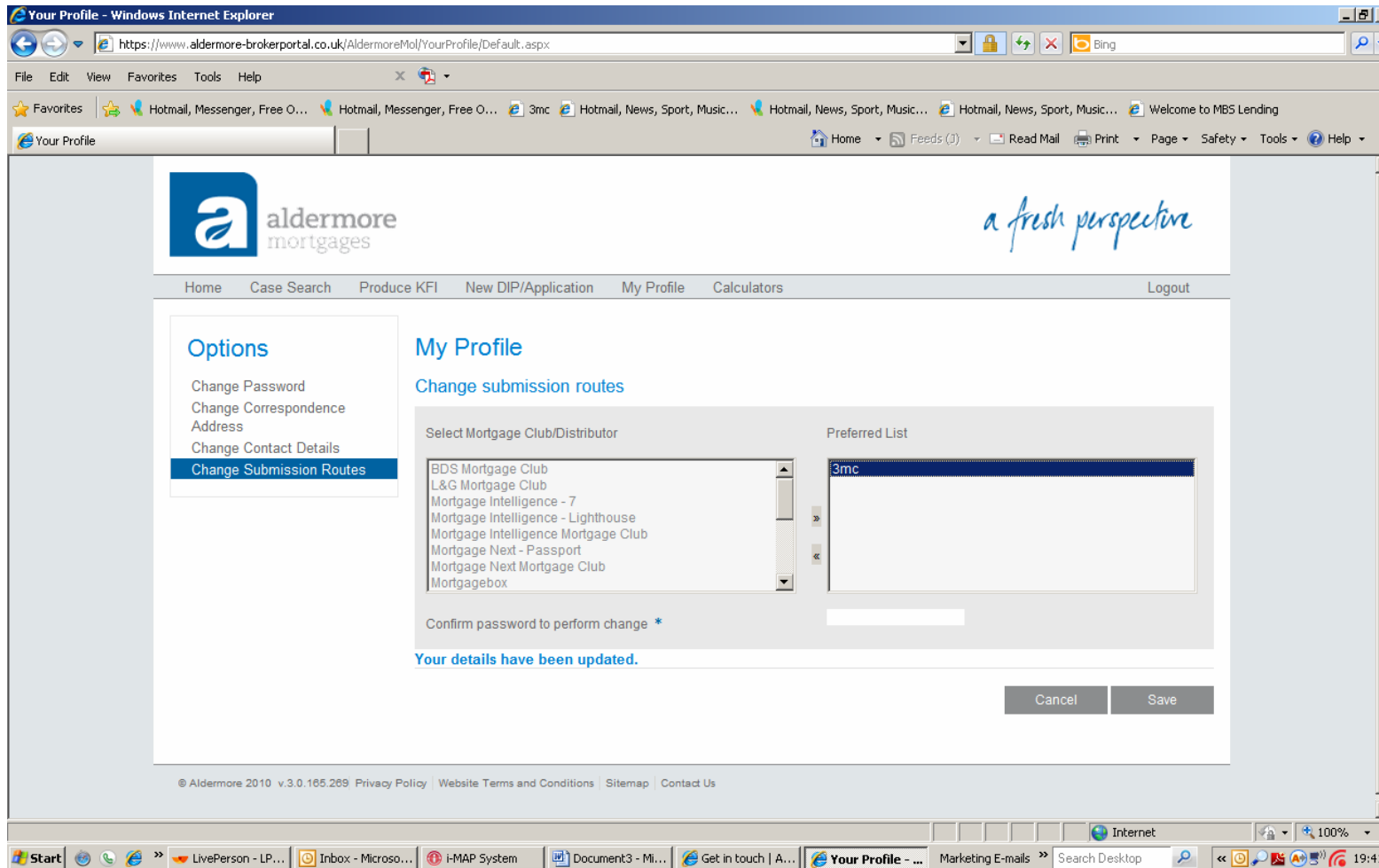
Confirm password to perform change \*

**Your details have been updated.**

Cancel Save

© Aldermore 2010 v.3.0.165.269 Privacy Policy | Website Terms and Conditions | Sitemap | Contact Us

**Mortgage intermediary to click on 3mc to highlight in blue and then click on the arrow in between the boxes to move 3mc into the right hand box.**



**3mc will now appear in the right hand box. Mortgage intermediary to confirm their password below the preferred list box to save the changes.**

**Options**

- Change Password
- Change Correspondence Address
- Change Contact Details
- Change Submission Routes**

### My Profile

#### Change submission routes

Select Mortgage Club/Distributor	Preferred List
BDS Mortgage Club	3mc
L&G Mortgage Club	
Mortgage Intelligence - 7	
Mortgage Intelligence - Lighthouse	
Mortgage Intelligence Mortgage Club	
Mortgage Next - Passport	
Mortgage Next Mortgage Club	
Mortgagebox	

Confirm password to perform change \*

**Your details have been updated.**

Cancel Save

© Aldermore 2010 v.3.0.165.269 Privacy Policy | Website Terms and Conditions | Sitemap | Contact Us

**Aldermore web portal confirms “Your details have been updated.”**